

MEERU MALDIVES

RESORT ISLAND

MEERU MALDIVES RESORT ISLAND SUSTAINABILITY





TABLE OF CONTENTS

1. EXECUTIVE SUMMARY

2. MEERU'S PURPOSE TO COMMIT

3. ENVIRONMENTAL SUSTAINABILITY

Water Management

Energy Consumption

Waste Management

The Five R's

Parley for the Oceans

Regular Beach and Island Cleanups

Euro-Divers Maldives

Meeru's Coral Nursery

Meeru Garden

Healing Earth

4. SOCIAL RESPONSIBILITY

Champions Training

Nature Walk

Local Purchasing

Meeru Museum

Local Heritage

Local Educational Trips

5. SUSTAINING PARADISE

Solar Panels

Water Management

Empowering Communities

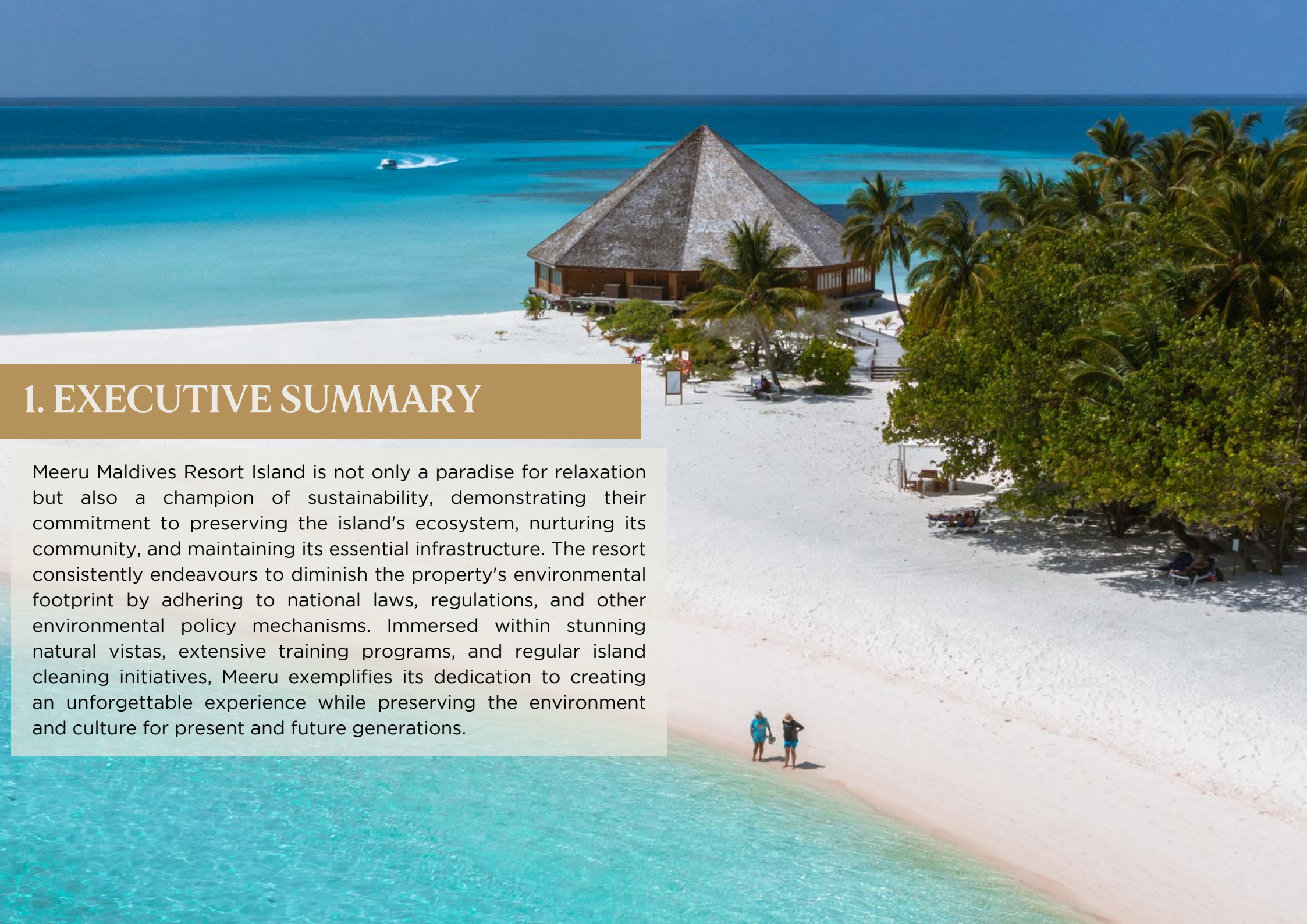
Enhanced Biodiversity

The Five R's

Educational Outreach

Carbon Neutrality

Energy Reduction



1. EXECUTIVE SUMMARY

Meeru Maldives Resort Island is not only a paradise for relaxation but also a champion of sustainability, demonstrating their commitment to preserving the island's ecosystem, nurturing its community, and maintaining its essential infrastructure. The resort consistently endeavours to diminish the property's environmental footprint by adhering to national laws, regulations, and other environmental policy mechanisms. Immersed within stunning natural vistas, extensive training programs, and regular island cleaning initiatives, Meeru exemplifies its dedication to creating an unforgettable experience while preserving the environment and culture for present and future generations.

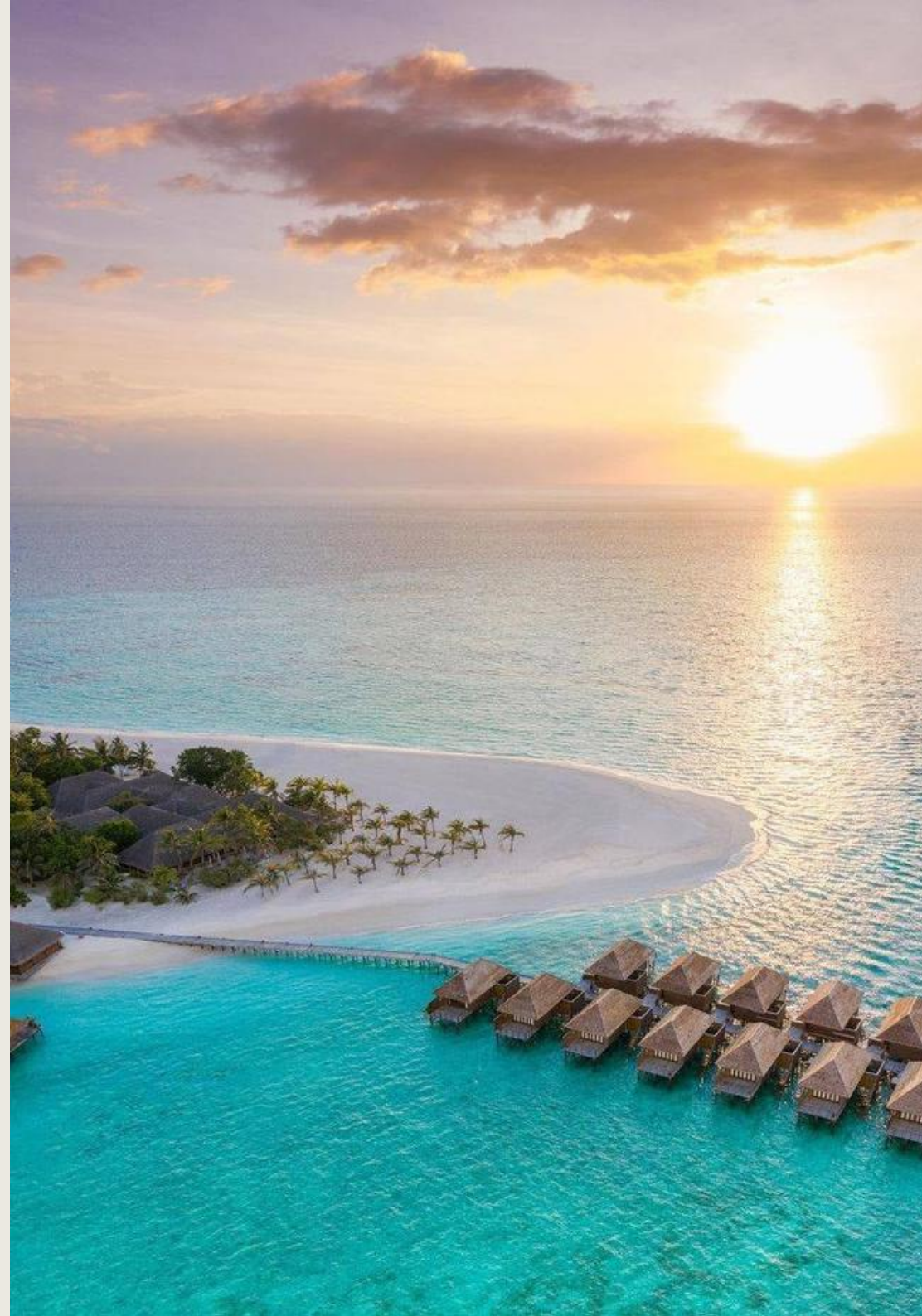
2. MEERU'S PURPOSE TO COMMIT

Meeru Maldives Resort Island invites discerning travellers seeking a lush Indian Ocean retreat, far removed from the daily grind in Kaafu Atoll. With its abundant natural foliage and sprawling 80-acre expanse, this island paradise caters to a diverse range of interests and desires.

The fundamental principle that has guided Meeru Maldives Resort Island from the very beginning is its continuous dedication to reducing its environmental impact and carbon footprint.

Meeru demonstrates a commitment to resource management that balances the economic, social, and aesthetic needs of both current and future generations, all while sustaining cultural integrity and vital ecological processes, including biodiversity and life support systems. The resort ensures its team members receive regular training on environmental matters to promote ongoing learning and education. Meeru hosts periodic island cleaning activities, with staff from various departments volunteering to preserve the island's beauty and cleanliness.

The resort is a staunch advocate for sustainability, wholeheartedly dedicated to prioritising the well-being of the island's ecosystem, its inhabitants, and its infrastructure.





3. ENVIRONMENTAL SUSTAINABILITY

- WATER MANAGEMENT

Water-saving initiatives, such as utilising treated sewage water for irrigating the gardens and implementing water flow aerators, have proven to be cost-effective measures at Meeru. The primary objective is to reduce water consumption significantly while maintaining guest comfort, health, and safety as foremost priorities. Efficient water management remains a top concern for the island, and Meeru continually fine-tunes flow rates and calibrates equipment to achieve optimal water utilisation.

The installation of a new 400-ton water plant, coupled with an advanced recovery system, has significantly enhanced water production on the island, enabling it to produce up to 19 cubic metres per hour with an impressive capacity that reduces energy consumption by 30-35% and ensures an energy-efficient plant operation, with savings of 20-25% in energy usage.

3. ENVIRONMENTAL SUSTAINABILITY

- ENERGY CONSUMPTION

The resort has implemented several methods to conserve energy, which include the use of energy-efficient equipment, the training of staff to minimize energy usage, the deployment of controlled and monitored automated outdoor timer systems, and the recycling of waste energy.

Although the resort cannot regulate all aspects of the guests' cooling preferences, and air conditioning is a fundamental service offered, Meeru recognizes the importance of ensuring the proper functioning and clear communication to guests about system usage. This is integral to their overall strategy for efficient energy management.

Instead of traditional methods, the resort utilises air conditioning systems to efficiently heat water, a significant step in energy reduction. A substantial energy-saving strategy involves the replacement of power-hungry boilers with cutting-edge recovery and inverter technology. These measures not only contribute to a substantial reduction in energy usage but also showcase the resort's commitment to sustainable practices, ultimately benefiting both the environment and its bottom line.

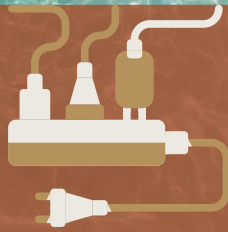
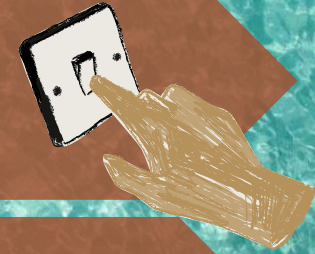
Meeru joins the global community in celebrating Earth Day, an occasion that underscores the commitment to environmental conservation. On this special day, Meeru reflects on the invaluable beauty and vitality of the planet and renews their dedication to preserving the natural wonders that surround them. Together, with their guests and partners, Meeru pledges to make every day Earth Day, working tirelessly to protect and nurture the environment that sustains humanity.



EFFICIENT ENERGY-SAVING TIPS:

**TURN OFF APPLIANCES
WHEN LEAVING THE
ROOM FOR OVER 10
MINS.**

**SWITCH OFF
UNNECESSARY
LIGHTS.**

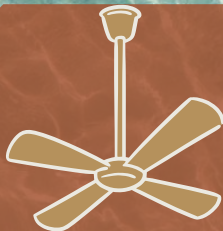
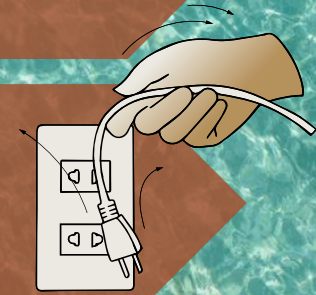


**USE APPROVED
EXTENSION.**

**OPT FOR MICROWAVE
OVENS OVER ELECTRIC
HOT PLATES.**

**KEEP DOORS/WINDOWS
CLOSED WHEN HEATING/
COOLING.**

**UNPLUG CHARGERS
NOT IN USE TO SAVE
ENERGY.**



**USE FANS FOR
COOLING INSTEAD OF
AIR CONDITIONERS.**

**REPORT LEAKS AND
EQUIPMENT
MALFUNCTIONS.**

Save energy: 100 watts for 3 hours daily = 60,991,500 Watts annually!
Energy savings preserve resources and reduce environmental impact.

The resort has taken proactive steps to foster a culture of sustainability by prominently showcasing these tips. They serve as a means to motivate both the staff and guests to actively participate in their mission of preserving the environment through the reduction of energy emissions.

3. ENVIRONMENTAL SUSTAINABILITY

- WASTE MANAGEMENT

THE FIVE R'S

In their firm dedication to safeguarding the pristine marine environment surrounding Meeru and within the Maldives, Meeru demonstrates a resolute commitment to the "No" to single-use plastic campaign. They prioritise the reduction of plastic water bottles by offering water in reusable glass containers, diligently refilled at their water desalination plant.

The resort further ensures that drinking water is supplied to both staff and guest areas via the water line, furnishing guest areas with refillable glass bottles and thereby eliminating the use of plastic bottles in guest rooms.



Wastewater generated across the island is efficiently managed through a system of strategically positioned lifting stations that collect it at allocated junctions. This wastewater is then channelled to Meeru's state-of-the-art Sewage Treatment Plant (STP), boasting a remarkable 1000-capacity. Here, specialised bacteria work diligently to separate contaminants, ensuring the water's purity before it is released for irrigation purposes, benefiting the lush garden areas and the golf course. Remarkably, the by-products of this meticulous treatment process are minimal, a testament to the effectiveness of Meeru's environmentally responsible practices, guaranteeing the well-being of the island and its surroundings.

The environmental benefits extend beyond the reduction of single-use plastic bottles, encompassing the elimination of the need to transport these bottles from Malé to the resort. Meeru's sustainability program adheres to a comprehensive policy aligned with the "5 R's" concept, ensuring waste minimization. These steps, applied in the respective order, include Refuse, Reduce, Reuse, Repurpose, and Recycle.



PARLEY FOR THE OCEANS

One partnership that Meeru holds in high regard is their collaboration with the Maldives' branch of Parley for the Oceans. This organisation champions the cause of minimising single-use plastics and promoting responsible plastic disposal to prevent ocean pollution.

Whenever feasible, they adhere to Parley's directives, which involve avoiding, intercepting, and reimagining plastic pollution standards. Parley regularly gathers recyclable waste and any plastic debris that washes up on their shores to ensure its environmentally responsible management.

REGULAR BEACH AND ISLAND CLEAN UPS

Meeru's team and its guests, in unison with millions of others worldwide, come together annually to take part in the Clean Up in the World event. Collaborating with the Euro-Divers team, alongside members from the Marine Centre and guests, they actively engage in house reef snorkelling and scuba diving clean-up activities on a local house reef. While Clean Up the World represents a significant global campaign, Meeru prioritises environmental concerns in its everyday operations, incorporating regular island clean-ups scheduled throughout the year.



EURO-DIVERS MALDIVES



PADI and Project Aware. They actively engage in the global AWARE campaign, organizing a series of programs aimed at educating and raising awareness among guests about the importance of ocean conservation and preservation.

Among the various initiatives offered, guests can choose from PADI AWARE Specialist, Dive Against Debris, Shark Conservation, Coral Reef Conservation, Fish ID, and Peak Performance Buoyancy programs. Each of these programs plays a significant role in enhancing awareness of the delicate marine ecosystem, fostering a greater understanding of the need to protect it.



MEERU'S CORAL NURSERY

Meeru Maldives is proud to collaborate closely with Save The Beach Maldives in a significant effort to reinforce marine conservation and restore the fragile coral ecosystems of the Maldives. Through this invaluable partnership, an impressive 4,000 pieces of coral have been painstakingly planted, effectively breathing life back into coral reefs that were once considered lifeless.

These efforts have transformed what was once a desolate underwater landscape into a thriving and vibrant marine ecosystem. Additionally, an underwater camera was strategically installed prior to these restoration initiatives, capturing the remarkable resurgence of biodiversity. Thanks to this collaboration, the reefs are now home to a myriad of new and diverse species, marking a remarkable achievement in the ongoing mission to preserve and protect the Maldives' marine treasures.



MEERU GARDEN

MEERU ALSO FEATURED ITS GARDEN DURING THE WORLD FOOD DAY CELEBRATION, AS PART OF ITS ONGOING EFFORTS TO PROMOTE SUSTAINABLE PRACTICES AND ENVIRONMENTAL AWARENESS.



The vegetable and fruit garden at Meeru covers well-developed cultivated areas where various fruits and vegetables thrive. These gardens consistently provide the resort's kitchens with a bountiful supply of fresh produce each day. On-site cultivation spans over 20 different varieties, ranging from sweet potatoes to watermelons, chilies, and zucchini. This diverse selection ensures that all the resort's dining establishments can offer patrons healthy, nutritious, and freshly sourced ingredients, without the need for external imports, thereby contributing to reduced environmental impact.

The garden includes a nursery for orchids and seeds, enhancing the resort's overall landscaping and gardens. Chefs and gardeners regularly visit the farm to maintain high-quality standards and production levels. Guests are cordially invited to participate in the Nature and Vegetation Exploration tour, allowing them to gain insight into how fruits and vegetables are successfully cultivated on a remote Indian Ocean Island and how this cultivation practice contributes to the preservation and respect of the natural surroundings.



HEALING EARTH

The Healing Earth products are elegantly packaged in recycled glass containers exclusively for Meeru guests. Several of Duniye Spa's treatments, including the popular signature rituals, Sense of Touch and Heaven on Earth, are enhanced by Healing Earth products, all of which are free from petrochemicals, synthetics, colourants, preservatives, and parabens, further promoting a holistic and environmentally conscious guest experience.



Meeru has formed a strategic partnership with Healing Earth, a renowned spa and hotel amenities provider, to introduce an exclusive line of green and eco-friendly Healing Earth products tailored exclusively for their guests. These thoughtfully crafted products feature meticulously chosen spa-quality active ingredients and aromatic oils, allowing guests to create personal wellness sanctuaries within the comfort of their villas. Besides being luxurious and effective, these natural products align with Meeru's commitment to environmental conservation.

The Healing Earth product range, designed to suit Meeru's equatorial climate, offers a soothing and nourishing experience, incorporating ingredients like pure aloe vera, ideal for post-sun care. What sets these products apart is their biodegradability, ensuring minimal impact on the delicate coral reef ecosystem surrounding Meeru. They also incorporate eco-friendly antimicrobial agents to prevent any harmful runoff into the sea.



4. SOCIAL RESPONSIBILITY

• CHAMPIONS TRAINING

In their pursuit of guest and employee well-being, the resort collaborates with accredited international partners such as Ecolab, Green Path Maldives, and Ian Greaves International (IGI UK). The management places a strong emphasis on continuous staff development to ensure that each team member is well-versed in health and safety programs and guidelines. This commitment to training encompasses a range of initiatives, including scheduled orientation sessions conducted in cooperation with these esteemed partners. The resort holds HACCP certification, and it is committed to providing training to both new and current staff members to uphold these standards



Team members are not only equipped with the knowledge and skills necessary to enhance guest and employee well-being but also instilled with a deep understanding of the resort's commitment to sustainability. This integrated approach includes educating staff on eco-friendly practices, waste reduction, and the preservation of the natural environment that surrounds the island. By encouraging a culture of environmental consciousness, Meeru ensures that every staff member actively contributes to the resort's mission of lessening its ecological footprint and preserving the pristine beauty of the Maldivian paradise for generations to come.



4. SOCIAL RESPONSIBILITY

• NATURE WALK

The "Nature Walk" is a regular activity at Meeru, typically conducted every Sunday or upon request based on in-house guest demand. This guided tour is organised by the Sports, Entertainment, and Activities department and offers guests an informative journey around the island. During the tour, participants receive insights into the island's history, particularly focusing on various trees and plants.

The tour places significant emphasis on the value of the island's flora, highlighting the importance and numerous benefits of preserving these trees and plants, thus instilling a deeper appreciation for the natural environment that surrounds the resort.



4. SOCIAL RESPONSIBILITY

• LOCAL PURCHASING

Meeru actively supports neighbouring Dhiffushi, by purchasing their locally sourced produce, including fresh fish. In addition to buying fish, the resort offers island tours to Dhiffushi to provide guests with an authentic experience, strengthening the bond between Meeru and the local community.

As an integral part of their commitment to the sustainability of the local community, Meeru employs a workforce comprising over 60% Maldivian citizens, with most team members hailing from different islands across the Maldives.

The resort further promotes local talent and products by selling arts and crafts created by team members and showcasing Maldivian-made goods in the Meeru Gift Shop. To offer guests an immersive experience in the rich culture of the Maldives, the Meeru Museum proudly displays various artefacts, accessible to all guests during their stay.



4. SOCIAL RESPONSIBILITY

• MEERU MUSEUM

As dedicated members of the international workforce at Meeru, the Maldivian staff hails from various islands across the island nation. Among them, there are staff who possess remarkable talents in crafting boat models, mastering the art of origami, or weaving intricate palm leaf creations. Their repertoire of local arts and crafts skills is a valuable asset that they bring with them when they join the Meeru team.

Meeru's management encourages these talented individuals to create a range of unique Meerumade items for their guests. These authentic, locally crafted souvenirs offer tourists an opportunity to take home genuine pieces of the Maldivian culture as cherished mementos of their stay at the resort. This ecosystem perseveres with the declining craftsmanship of locals and thereby sustains the local heritage.



• LOCAL HERITAGE

Meeru stands as a pioneer in Maldives tourism, as it was among the initial tourist resorts to welcome visitors in 1976. The resort embodies the authentic spirit of a Maldivian island experience, offering more than just stunning beaches and ocean vistas. At Meeru, they seize the opportunity to enlighten and enrich their guests' understanding of this enchanting destination.

Visitors have the chance to explore a dedicated museum, where they can delve into the rich culture and heritage of the Maldives, further enhancing their appreciation of this magical locale. As you walk through the Meeru Museum, you can almost hear the echoes of traditional drums, envision fragments of time in the form of passed-down crockery, and admire heritage apparel that serves as a testament to the simple yet vibrant past of Maldivian culture.



Meeru Museum showcases the skeleton of a Blue Whale, the world's largest creature, reaching up to 32 meters (108 ft) in length and weighing over 170 metric tons. These massive creatures are characterized by their long, slender bodies with bluish-grey coloring on the back and lighter tones underneath. This specific Blue Whale, once about 18 meters long, was found drifting in the Veymandhoo Channel, south of Thaa Atoll in the Southern Maldives, by fishermen from Guraidhoo Island on January 20, 1997. They towed the carcass to their island to collect oil from its bladder, a traditional Maldivian practice used to treat the wood of local Dhoni Fishing Boats.



4. SOCIAL RESPONSIBILITY

• LOCAL EDUCATIONAL TRIPS

In a gesture of support for local schools, Meeru opens its doors to educational and exposure trips from various institutions across the Maldives. Dhiffushi BTEC School, situated on a nearby island, and Iskandar School in Malé City, are among the schools that had the opportunity to visit Meeru in 2018 and 2019.

These educational/exposure trips are designed to offer students a firsthand understanding of the diverse facets of Meeru's operations. It allows them to delve into the workings of various departments, gaining valuable insights that may pave the way for potential internships or future employment opportunities.

During these visits, the General Manager, along with the management team, imparts knowledge about Meeru and imparts words of encouragement to motivate students in their academic pursuits, emphasising the importance of dedicated efforts for a promising future.



5. SUSTAINABLE PARADISE

SOLAR PANELS

Installation of solar panels finalised to be implemented within the next 5 years. Estimated 3000-4000 litres of fuel saved with the implementation of an additional battery pack.

WATER MANAGEMENT

Install Additional Metres:

- > To enhance mapping and monitoring.
- > Identified need for 52 new metres (excluding existing room metres).
- > Separate metering for key areas like guest blocks, staff blocks, kitchen entry points, swimming pools, etc.

Upgrade Irrigation System:

- > Expand the drip irrigation system for efficient water use.
- > Increase utilisation of treated greywater for irrigation.
- > Implement sensor-controlled taps in public areas.
- > Promote water-saving awareness among occupants.

Set a new target to achieve a 10% reduction from the benchmark of 1.46 M³ PGN.

EMPOWERING COMMUNITIES

Develop programs and initiatives to empower local communities in the region to be aware of and advocate for environmental conservation efforts.

Continue to provide environmental awareness training for staff and aim to increase the number of participants by 5% each year.

Encourage guests to participate in Meeru's initiatives aimed at minimising their environmental footprint.



**ENHANCED
BIODIVERSITY**

Implement initiatives to enhance biodiversity for the health of the surrounding ecosystems.

THE FIVE R'S

Implement strategies to eliminate plastic usage and achieve a plastic-free environment.

Achieve a 5% reduction in overall waste by exploring possibilities for material reuse and recycling.

Seek alternatives that are biodegradable or natural to replace potentially harmful chemicals, aiming for a 5% reduction.

Ensure that 5% of non-consumable items incorporate recycled content.

**EDUCATIONAL
OUTREACH**

Expand educational outreach programs and activities to raise awareness and knowledge about sustainability issues.

CARBON NEUTRALITY

Implement measures to achieve carbon neutrality within the Carbon Neutrality five-year time frame.

ENERGY REDUCTION

Develop a system to transform and utilise excess heat from radiators. Projected to show improvement in the utilisation of excess heat within 4 years.

Long-Term LED Adoption.

Modernising air conditioning systems to inverters to improve energy efficiency and guest comfort.

Enhance energy monitoring by installing additional metres, focusing on areas like kitchen access points, water heaters, and guest rooms.

Implement automatic air conditioning shutdown when key cards are removed, with guests advised to maintain a temperature of 25°C for optimal AC efficiency and to keep balcony doors closed while AC is active.

Initiate a project to introduce Energy Management Systems in new staff buildings, enabling automated control of energy usage by automatically shutting down electrical systems upon occupant exit.

Sustain energy-saving awareness efforts, such as encouraging each room to reduce daily electric energy use by 100 watts for three hours, resulting in a projected annual savings of 60,991,500 watts.

MEERU MALDIVES

RESORT ISLAND

MEERU MALDIVES RESORT ISLAND | NORTH MALÉ ATOLL, MALÉ 20187, | MEERU.COM | REPUBLIC OF MALDIVES

